

Project Information System (PIS)

IT based Construction & Project Management

Christos D. Emmanouilidis, Civil Engineer, MSc.

Andreas P. Vlachos, Mining Engineer NTUA





The Need



A supervising Agency that will exercise effective data *harnessing* and management of design, construction, HSE and Quality Assurance activities. Independent Engineers' consultants are operating a complex **Quality Based System** that allows efficient monitoring, Quality Assurance throughout Projects' life cycle.



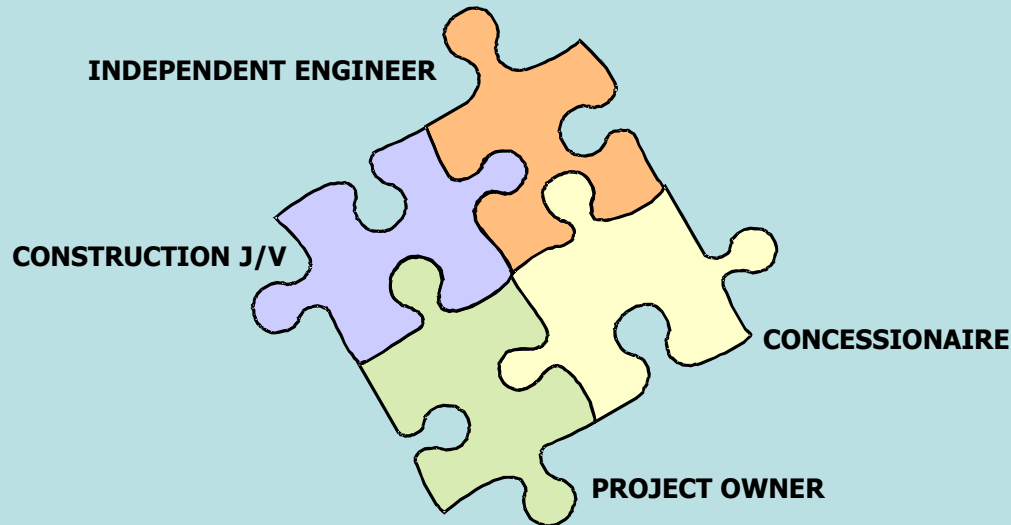
An Information Technology System that will keep track of all records, processes and procedures conglomerating data from different engineering disciplines and all Project phases.



The Solution



A web based IT system that will facilitate collaboration and integration of raw data and turn into useful information. Data is produced by heterogeneous organizational structures and circulated according to individual QMS processes. The IT system organizes and simplifies the *puzzling* environment of a typical PPP Project whilst provides secure access to all users.





Our Proposal



The IT system should manage, centrally, all document based activities, integrate information with MS Project, Primavera and ERPs and deliver personalized on-demand reporting according to the specific role of each participant in the project.

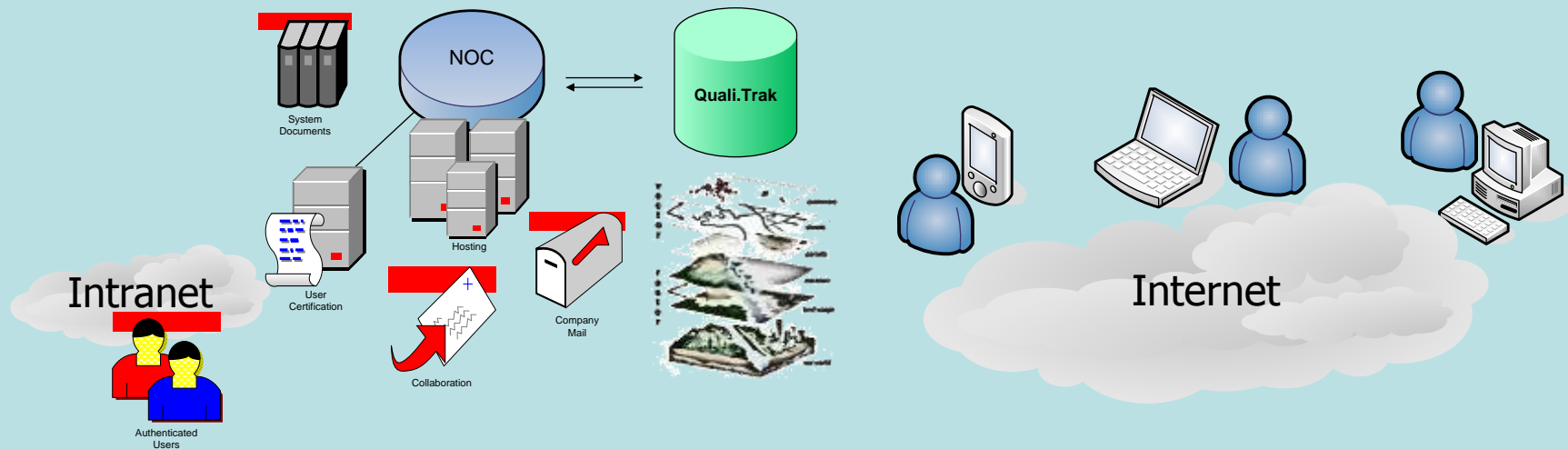
Project.Trak™,

is a Construction and Project Collaboration Platform developed by Data Concept S.A. as the evolution of Eureka™, the document control and data management system operated by Jacobs Consulting, the Independent Engineer of the ESS & IWP Project (ATTIKI ODOS) and several 'Athens 2004' Projects.



System Architecture

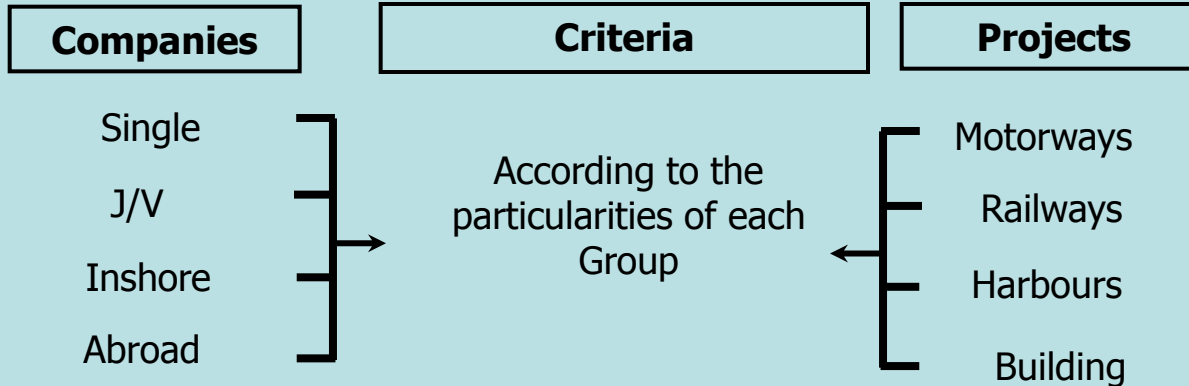
The topology will involve a high availability Network Operating center (NOC) that will host Quali.Trak modules, store and secure project data and facilitate personalized user functionality. Information and access to the system is possible through a multi- channeling operation (Web Browsers, PDAs etc.)





Multi Projects/Companies

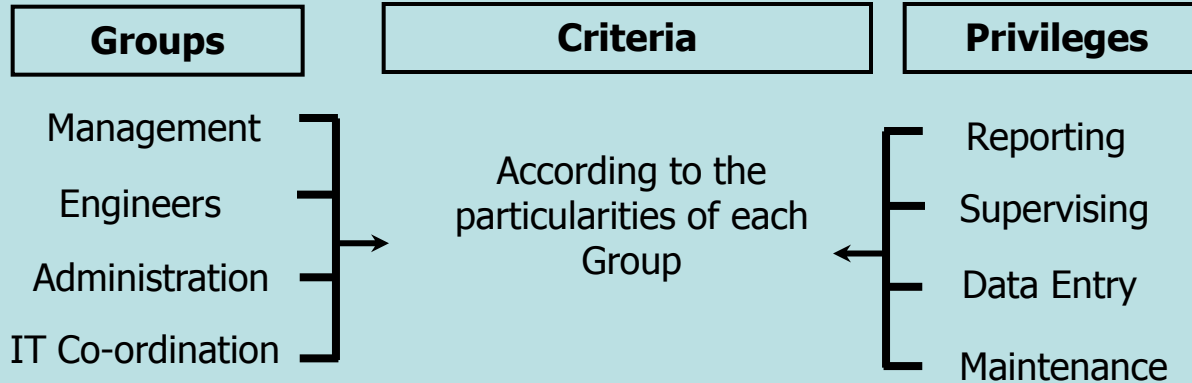
The System supports multi tasking and multi companies. Salfo can monitor each company and corresponded documentation as the general administrator of the System. The system can support multiple roles and multiple languages for each project.





Role Management

User authentication and profile management assures that each party has access to a specific set of information according their role in the Project through privileges granted by the System. All users are categorized to groups as follows:





Qualitrak Features



Project.Trak™ is a component based approach to Integrated Construction Management (ICM) that is totally customizable and adaptable to individual institutions and end user needs encompassing the whole enterprise concerned with satisfying the needs of managers. Project.Trak™ is a fully-integrated modular software platform that provides easy, tailored application solutions for today's project, construction, quality, health and safety and laboratory managers.

As a modular collaboration suite, Project.Trak™ covers all aspects of the construction industry providing the following modules:

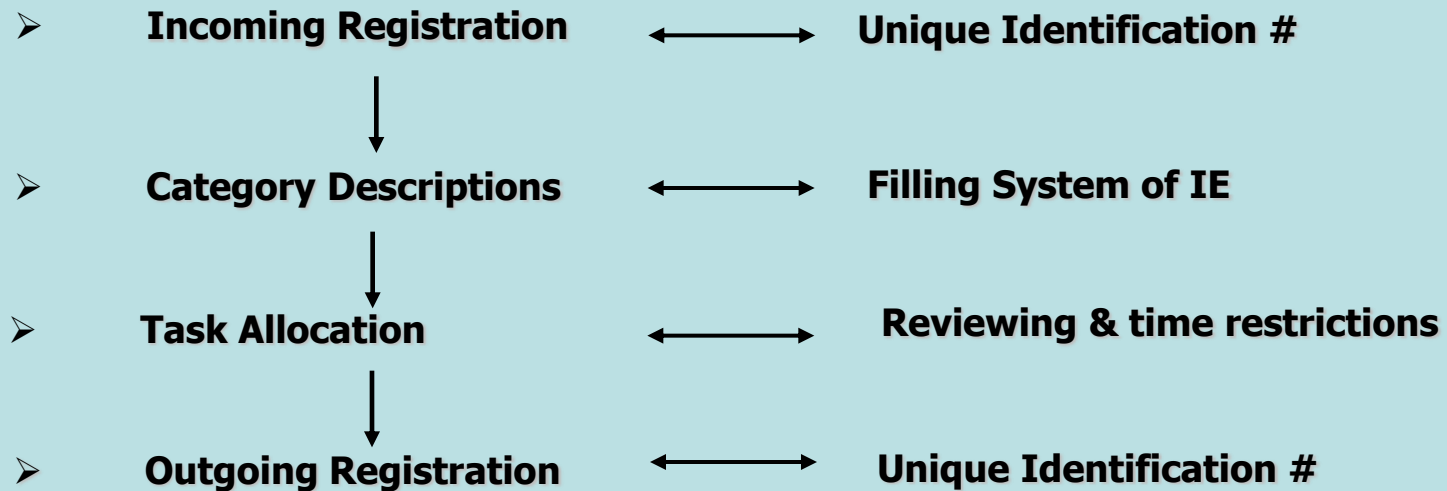
- Design Management
- Materials Approval
- Construction Document Management
- HSE
- Quality Control
- QMS Document Management



Philosophy & Concept



Every information has a unique way of entering and being recorded into the system. Incoming protocol – registration office can be considered the One – Stop – Shop where all information retained by incoming objects (emails, letters, faxes etc.) are categorized (filling system – focus categories) and stored into the system.

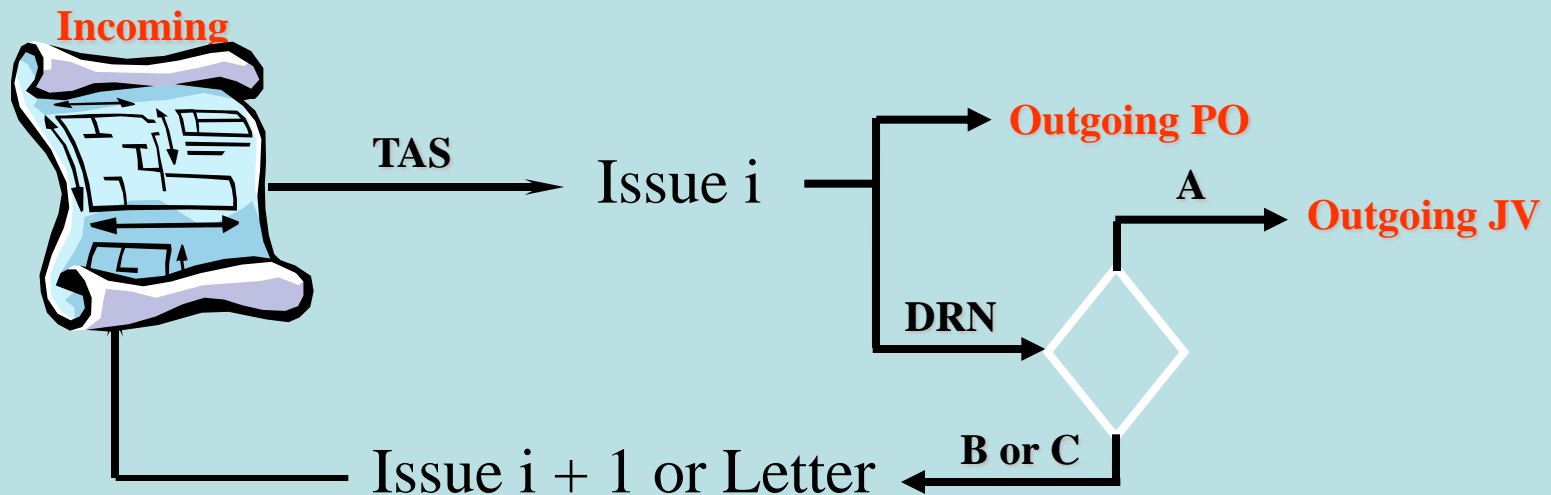




Design Management



Project.Trak™ Design Management Module, tracks all incoming and outgoing issues and the correspondent design review records produced by each discipline. The system records all time restrictions regarding the contractual reviewing periods and assures the precise encoding of each design (ex. per office, per subject and issue). Due its web based approach, the system allows distant collaboration between parties (design offices, IE reviewers, PO etc.). DIS requirements can be actually implemented through checklists.

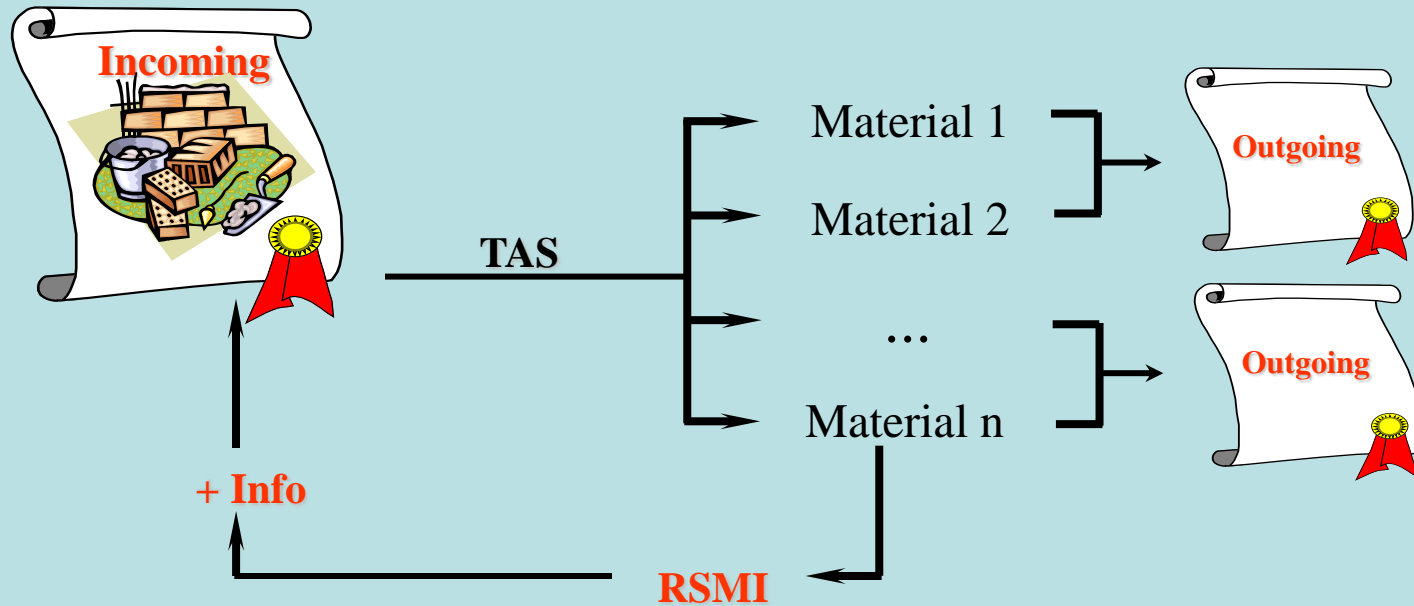




Materials Approval



Project.Trak™ Materials Approval module administers all submissions regarding materials to be incorporated into the project from approved suppliers. TCC and SCC requirements can be actually implemented through checklists for every type of material.

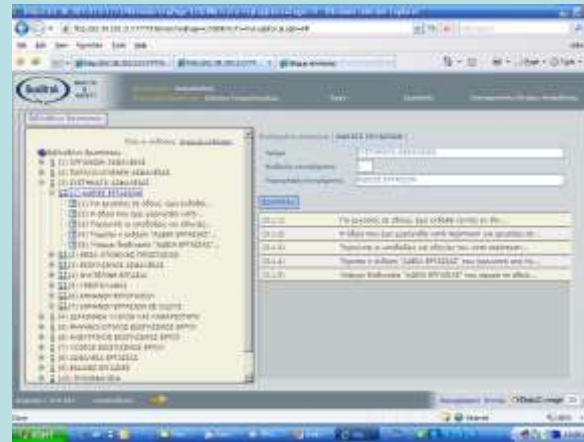




Health – Safety & Environment



Project.Trak™ HSE module that has been developed in association with Management Force SA, and incorporates a prototype methodology (-2 /+2) for assessing risk factors involved in any type of construction. The system has pre-installed all legal documentation and dynamic evaluation forms so that the HSE Auditor can use for any specific type of works.





Quality Control



This Project.Trak™ module refers to a set of laboratory test forms regarding the quality control of soils, aggregates, concrete and asphalt. The module can be used either by the JVs quality control laboratory or by IEs staff in order to inspect and verify materials test results. QC and Construction Document Management modules data can be related in order to verify that all adequate tests for a project item have been carried out successfully by the Contractor.



- Sieve Analysis
- Sand Equivalent
- Marshall test
- Concrete compression test
- Concrete production statistical analysis
- Falling weight deflectometer
- Pump integrator
- Asphalt Texture Depth
- Shear testing
- Skid resistance test
- Pull out tests
- Asphalt – Concrete mix design approval tests.



Project.Trak™ was developed using a framework that combined dynamic programming techniques and the engineering management knowledge gained during the analysis and development of interdependent subset of components that were interoperating for individual enterprises such as materials testing laboratories, ISO consultants and organizations, international project and construction management firms, designers and contractors.

Data Concept's aim is to provide computing capabilities that are highly integrated with the work that is done in a normal business setting and to provide these capabilities without imposing unacceptable cognitive load on the Project Management and other system developers. Thus, these capabilities are based on the way in which is already done, tracking changes in the nature of that work as it occurs, and not redefining the nature of the work itself.